



August 22, 2013



2040 LRTP

Agenda

- ▶ Introductions
- ▶ SERPM7 Status Report
- ▶ Public Involvement
 - Virtual Meeting
 - Additional Data Collection
 - Final Results Schedule
- ▶ Population/Employment Data Review
- ▶ Next Steps
- ▶ Meeting Adjournment



MOBILITY OPTIONS
2040 Miami-Dade
Transportation Plan
EYES ON THE FUTURE



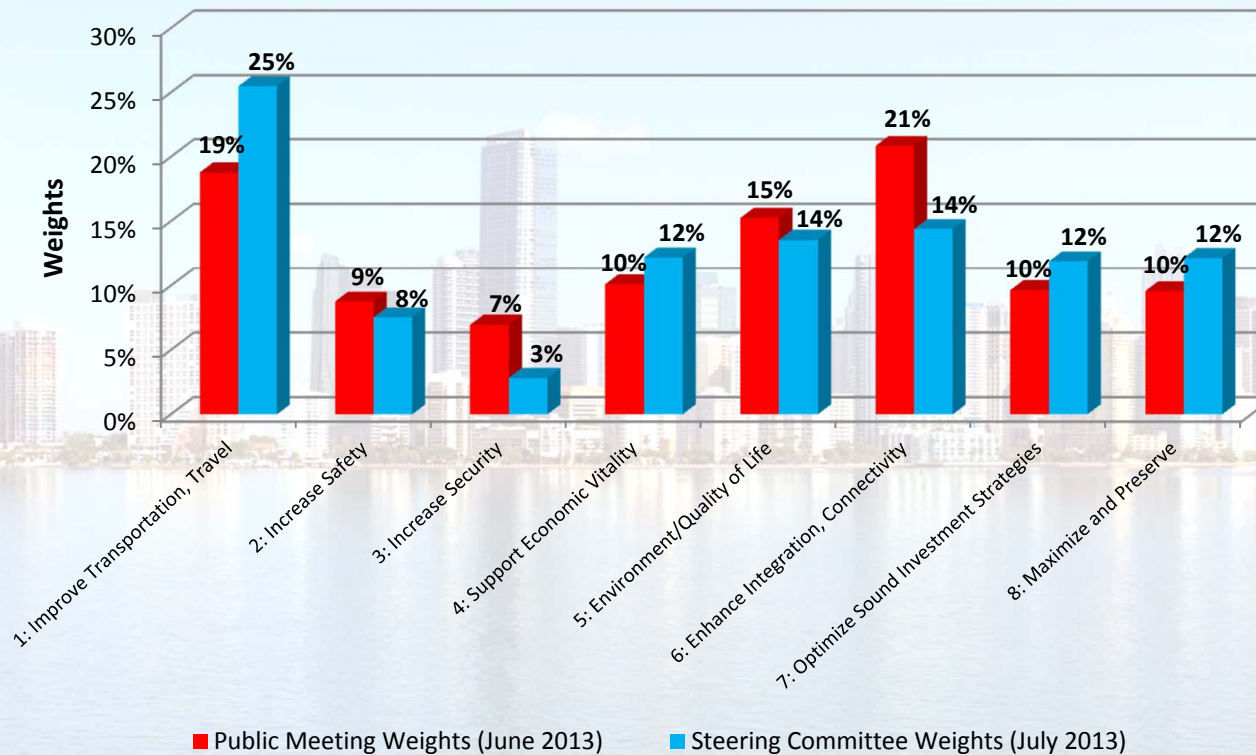
Public Involvement

- Public Meetings (June 2013)
- Virtual Meeting (August/September 2013)
- Additional Data Collection
 - Florida International University
 - Miami-Dade College North Campus
 - Dolphin Mall
- Final Results
 - Steering Committee Review
 - TPC/MPO Board schedule



Public Meetings vs. Steering Committee Goal Weights

DRAFT LRTP Goal Weights



MOBILITY OPTIONS
2040 Miami-Dade
Transportation Plan
EYES ON THE FUTURE



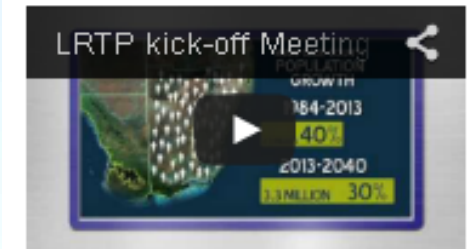
Public Involvement – Virtual Meeting



- Virtual Meeting online for 45 days (August/September 2013)
- Consists of...
 - Prezi presentation with voiceover
 - Review of Goals and Objectives
 - Online survey with Goal weighting question at end
 - Optional comment form

Attend a "Virtual" meeting here!

1. First, watch the video



2. Then, read this important notification

Before completing the survey, please review the L RTP Goals and Objectives because there is an important question asking for you to prioritize the plan Goals. [Click here for the Goals and Objectives](#)

3. Then, take the survey



4. Finally, provide additional comments if you desire



Por favor exprese sus comentarios

Public Involvement – Virtual Meeting Goal Weighting

- Goal weighting interface in Virtual Meeting
- Total “allocation” computes automatically
- Link to full Goals and Objectives available at survey link
- Virtual Meeting can be accessed on home page or Get Involved page
www.miamidade2040lrtp.com



Miami-Dade MPO Long Range Transportation Plan Community Feedback

New Page

23. Below are the 8 goals of the Long Range Transportation Plan. If you were given \$320 to “spend” across the Goals in accordance with their relative importance to you, how much would you spend? For example if you felt that all of the goals were of equal value, you could spend \$40 across the goals. Or, you may feel as if 1 goal is the most important to you and you could spend all of your money \$320 in that goal. (Note: your allocation must equal \$320)



Miami-Dade Metropolitan Planning Organization
telephone: 305.375.4507 | fax: 305.375.4950 | email: mpo@miamidade.gov

- ☐ Goal 1: Improve Transportation System and Travel
- ☐ Goal 2: Increase the Safety of the Transportation System for Motorized and Non-motorized Users
- ☐ Goal 3: Increase the Security of the Transportation System for Motorized and Non-motorized
- ☐ Goal 4: Support Economic Vitality
- ☐ Goal 5: Protect and Preserve the Environment and Quality of Life and Promote Energy Conservation
- ☐ Goal 6: Enhance the Integration and Connectivity of the Transportation System, Across and Between Modes, for People and Freight
- ☐ Goal 7: Optimize Sound Investment Strategies for System Improvement and Management/Operation
- ☐ Goal 8: Maximize and Preserve the Existing Transportation System

0 out of \$320 Total

Back

Submit

Public Involvement – Additional Data Collection



Locations

- Florida International University
- Miami-Dade College North Campus
- Dolphin Mall



Methodology

- Half day kiosks
- Video playing on loop
- Ballot boxes available for Goal weighting



MOBILITY OPTIONS
2040 Miami-Dade
Transportation Plan
EYES ON THE FUTURE

Goal Weighting Exercise

- Ballot boxes for each of the 8 LRTP Goals
- Participants were each given \$320 of play money
- Participants instructed to “spend” all \$320 on Goals according to relative importance of each Goal to them.
(e.g. if all goals are equally important, \$40 should be placed in each box)
- Dollars tallied by Goal represent public weighting of goals



MOBILITY OPTIONS
2040 Miami-Dade
Transportation Plan
EYES ON THE FUTURE



Public Involvement

- Final Goal weighting data collected from public presented to Steering Committee in October
- Presentation to TPC and MPO Governing Board in October
 - Goals and Objectives
 - Recommended Goal weights
 - Public input

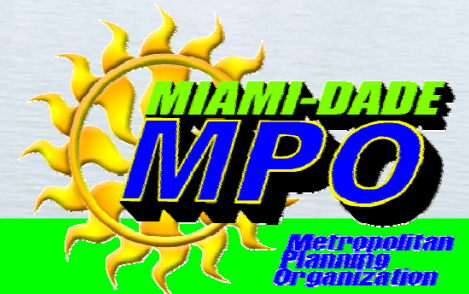


MOBILITY OPTIONS
2040 Miami-Dade
Transportation Plan
EYES ON THE FUTURE



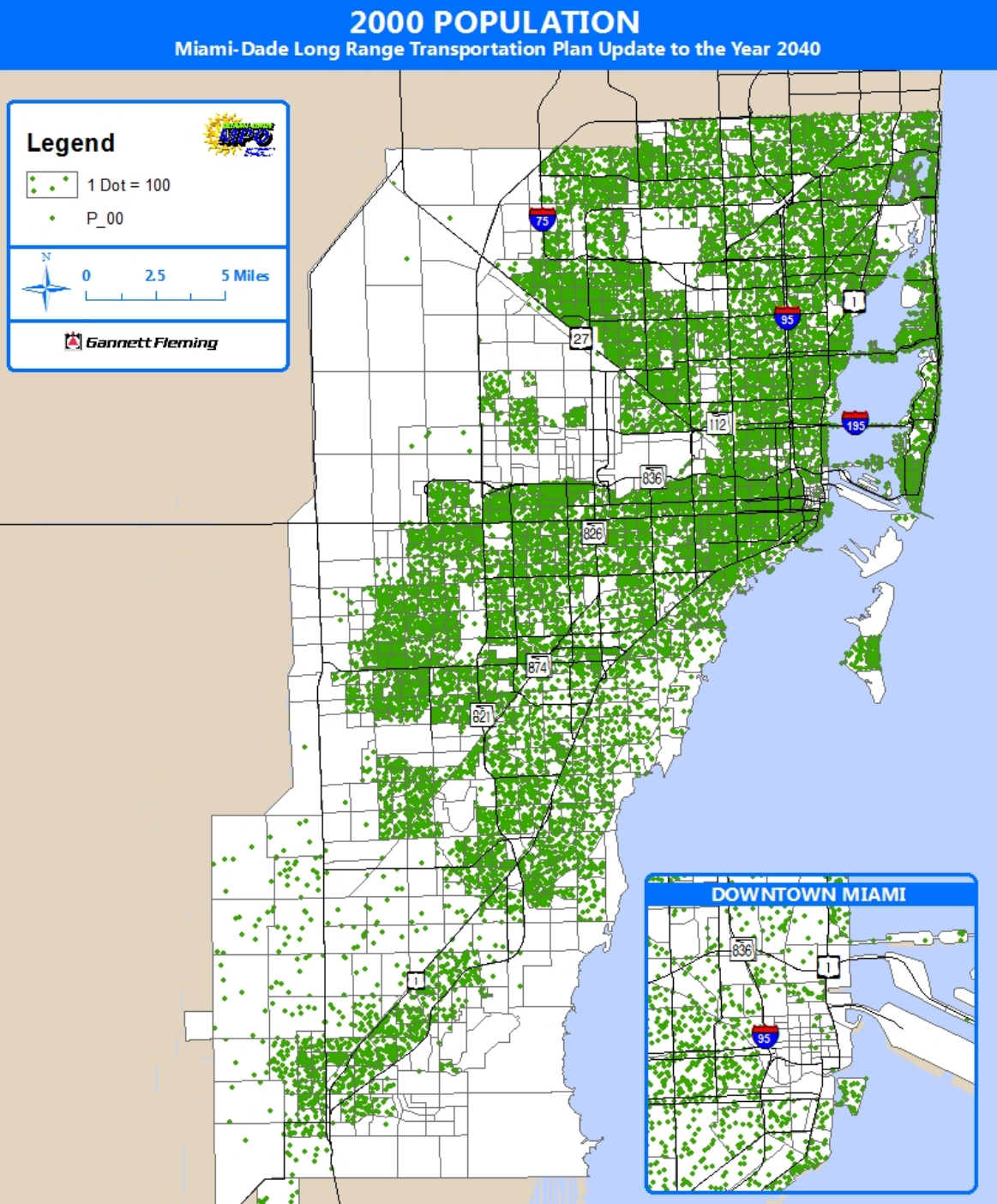
Population Data

Planning Area	2035 LRTP		2040 LRTP		Annualized Growth Rate			Percent Growth	
	2005	2035	2010	2040	2000 - 2010	2005 - 2035	2010 - 2040	2005 - 2035	2010 - 2040
North	496,700	611,100	513,900	712,000	1.0%	0.7%	1.1%	23.0%	38.5%
Beach/CBD	360,500	474,200	380,800	543,800	1.2%	0.9%	1.2%	31.5%	42.8%
Central	356,600	432,100	375,800	480,400	1.7%	0.6%	0.8%	21.2%	27.8%
South	374,000	761,200	437,900	654,900	2.6%	2.4%	1.4%	103.5%	49.6%
West	389,500	498,000	386,900	435,300	-0.3%	0.8%	0.4%	27.9%	12.5%
Northwest	381,800	501,600	398,900	478,900	1.5%	0.9%	0.6%	31.4%	20.1%
Total	2,359,100	3,278,200	2,494,200	3,305,300	1.2%	1.1%	0.9%	39.0%	32.5%



Population Data

- 2000 Population
2.20 million

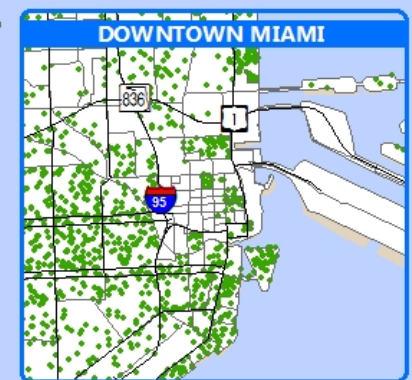
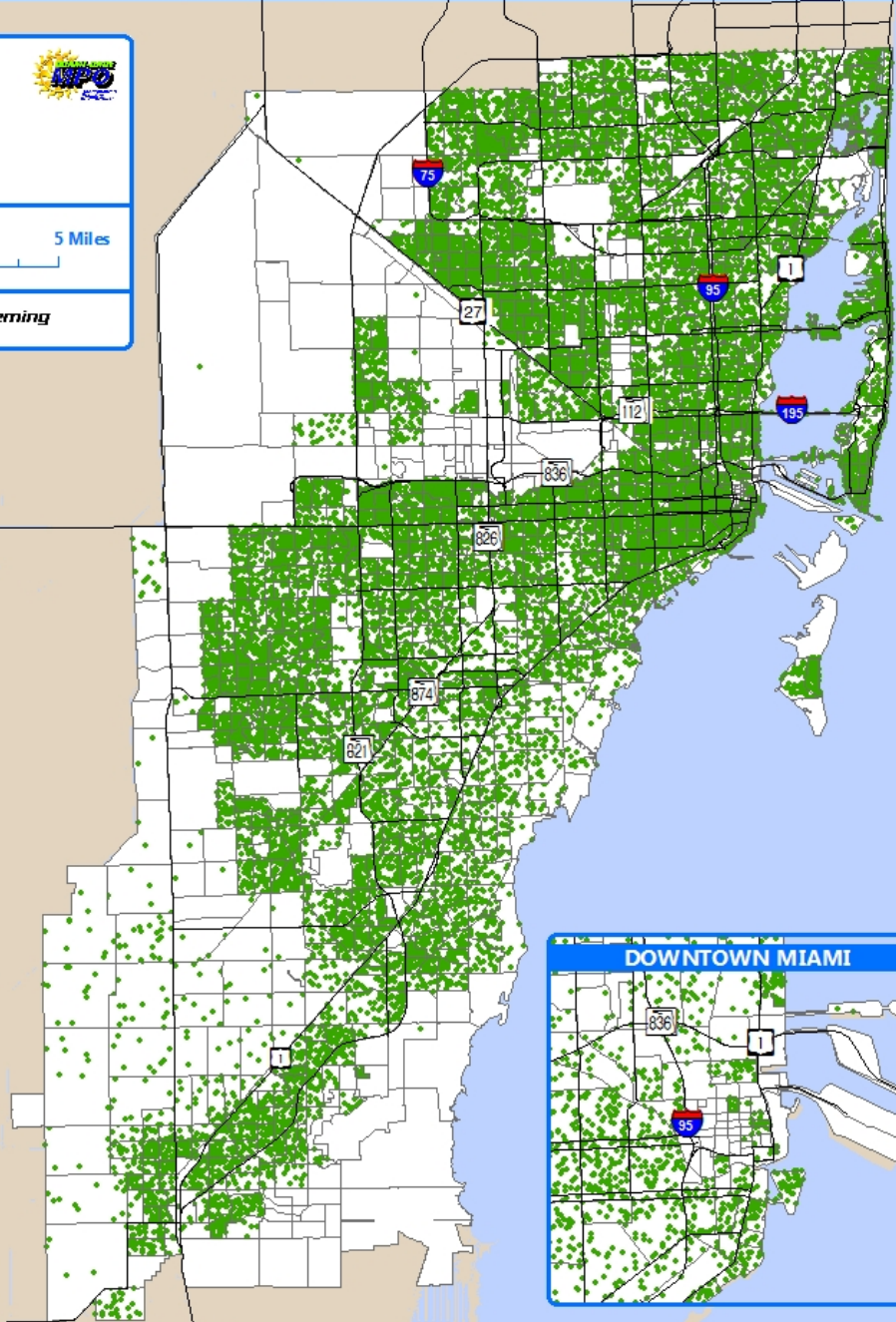
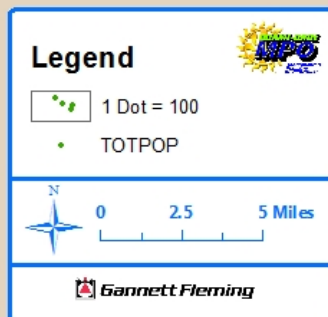


Population Data

- 2010 Population
2.49 million

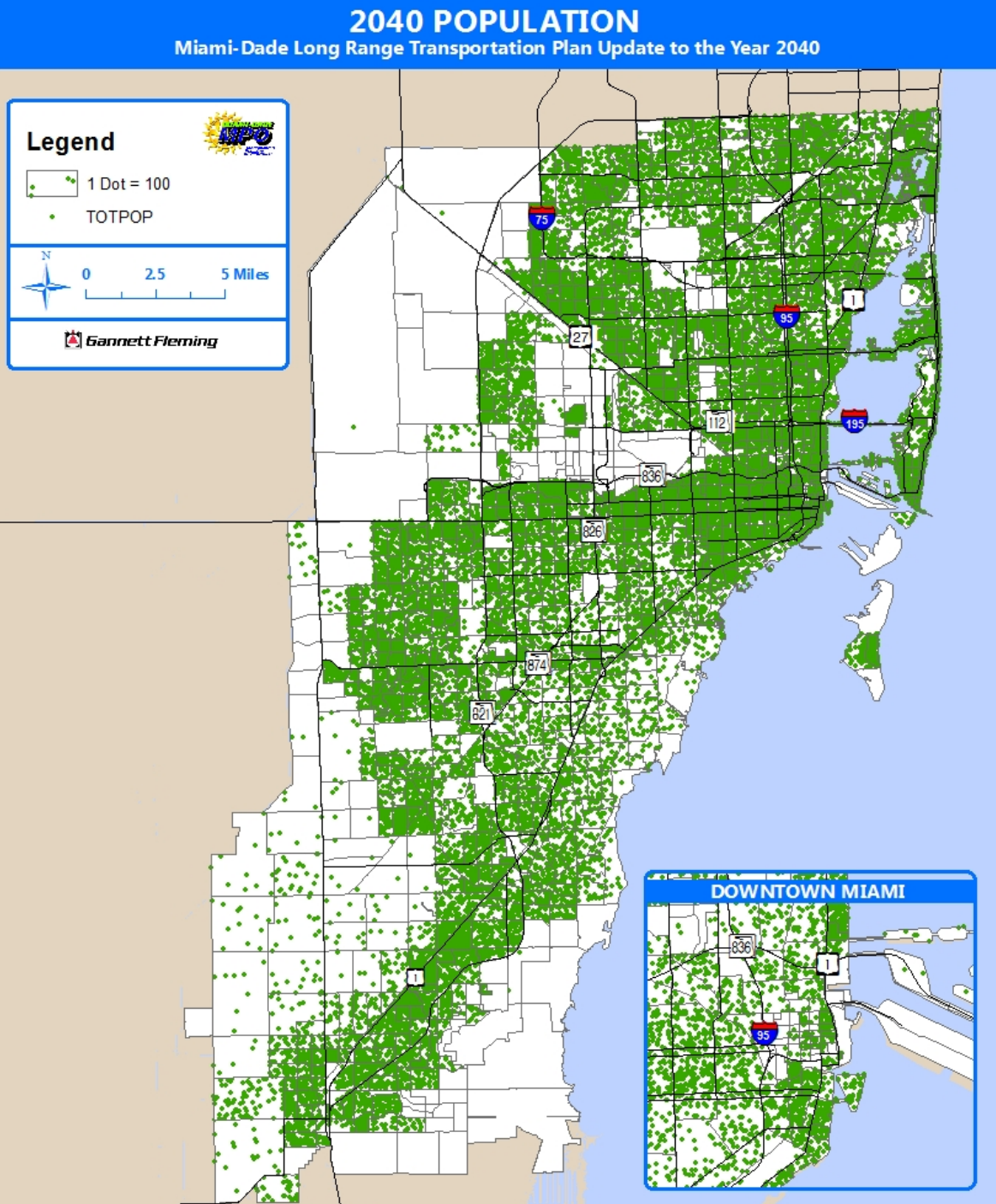
2010 POPULATION

Miami-Dade Long Range Transportation Plan Update to the Year 2040



Population Data

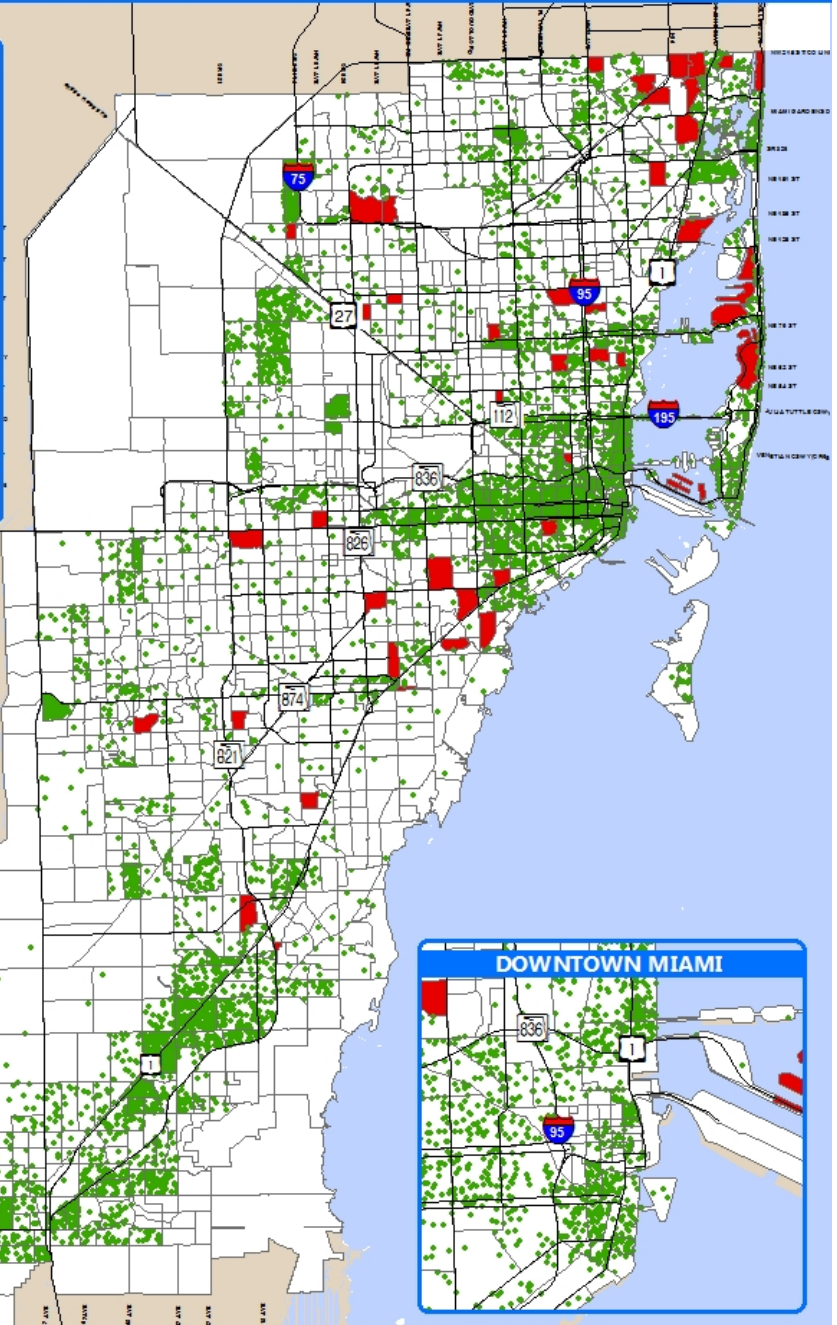
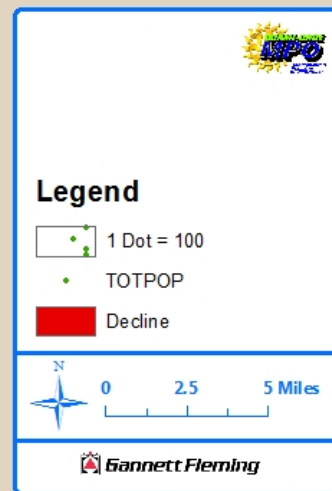
- 2040 Population
3.30 million



Population Data

- 2000 Population
2.20 million
- 2010 Population
2.49 million
- 2040 Population
3.30 million
- 2010 - 2040
Population
Growth
811,000

2010 - 2040 POPULATION GROWTH Miami-Dade Long Range Transportation Plan Update to the Year 2040



Employment Data

Planning Area	2035 LRTP		2040 LRTP		Annualized Growth Rate			Percent Growth	
	2005	2035	2010	2040	2000 - 2010	2005 - 2035	2010 - 2040	2005 - 2035	2010 - 2040
North	269,100	380,700	253,400	361,700	0.2%	1.2%	1.2%	41.5%	42.7%
Beach/CBD	281,200	382,000	253,400	390,500	1.9%	1.0%	1.5%	35.8%	54.1%
Central	317,800	446,400	307,500	407,600	2.1%	1.1%	0.9%	40.5%	32.6%
South	131,800	180,800	176,500	290,300	4.3%	1.1%	1.7%	37.2%	64.5%
West	83,100	108,900	121,300	172,900	1.8%	0.9%	1.2%	31.0%	42.5%
Northwest	297,100	496,700	301,700	428,000	1.6%	1.7%	1.2%	67.2%	41.9%
Total	1,380,100	1,995,500	1,413,800	2,051,000	1.8%	1.2%	1.2%	44.6%	45.1%

Planning Area	Census Years		2035 LRTP		2040 LRTP	
	2000	2010	2005	2035	2010	2040
North	0.53	0.49	0.54	0.62	0.49	0.51
Beach/CBD	0.62	0.67	0.78	0.81	0.67	0.72
Central	0.78	0.82	0.89	1.03	0.82	0.85
South	0.34	0.40	0.35	0.24	0.40	0.44
West	0.25	0.31	0.21	0.22	0.31	0.40
Northwest	0.75	0.76	0.78	0.99	0.76	0.89
Total	0.54	0.57	0.59	0.61	0.57	0.62



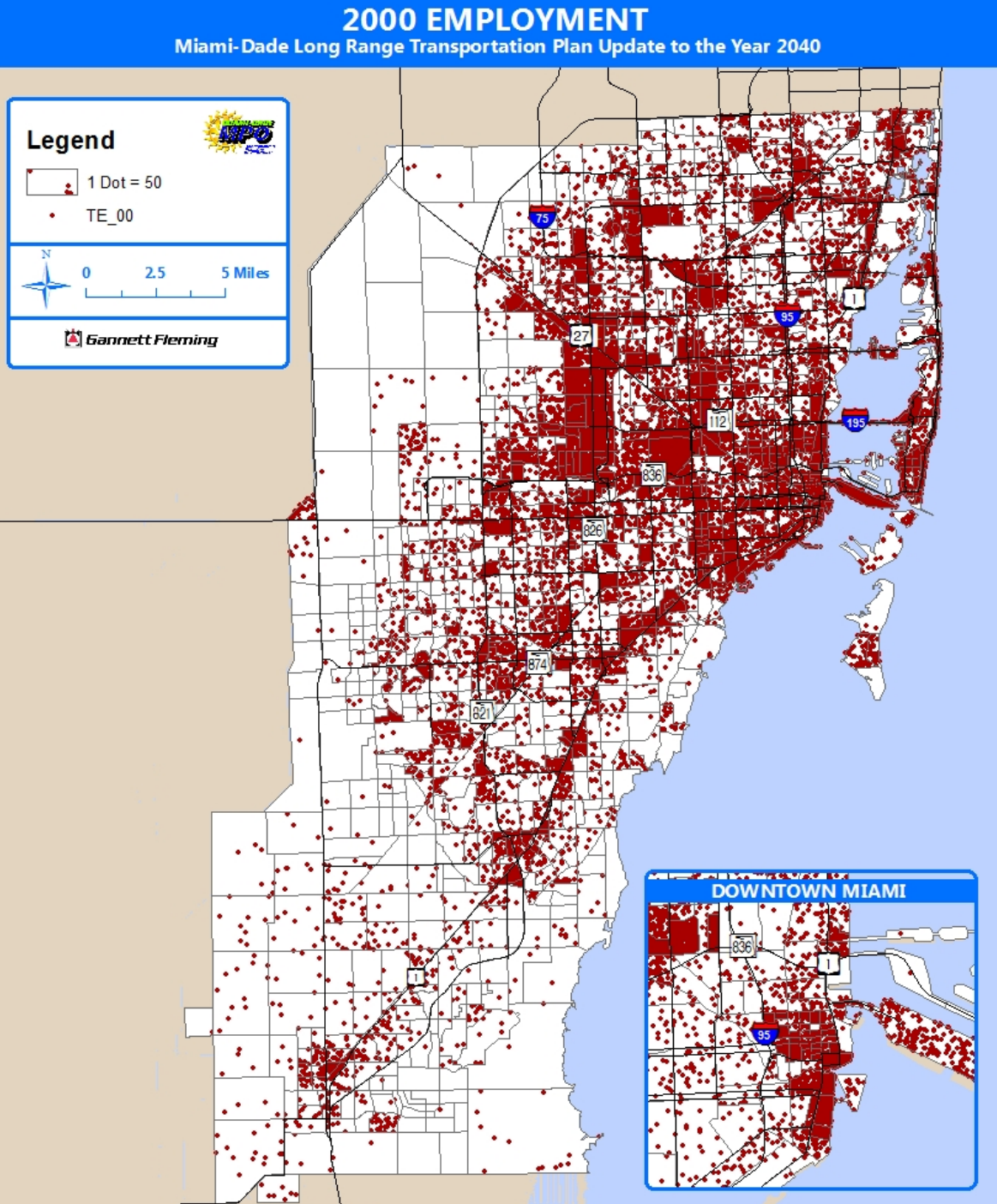
2035 and 2040 LRTP Employment Data

- Countywide projected annualized employment growth between 2010 to 2040 about 2/3 of annualized growth rate between 2000 to 2010
- South planning area has the highest projected growth rate in employment between 2010 to 2040
 - Consistent with the growth rate between 2000 to 2010 where South has the highest growth
- Employment per person projected to increase across all planning areas between 2010 to 2040
 - Consistent with pattern between 2000 to 2010 with the exception of North planning area



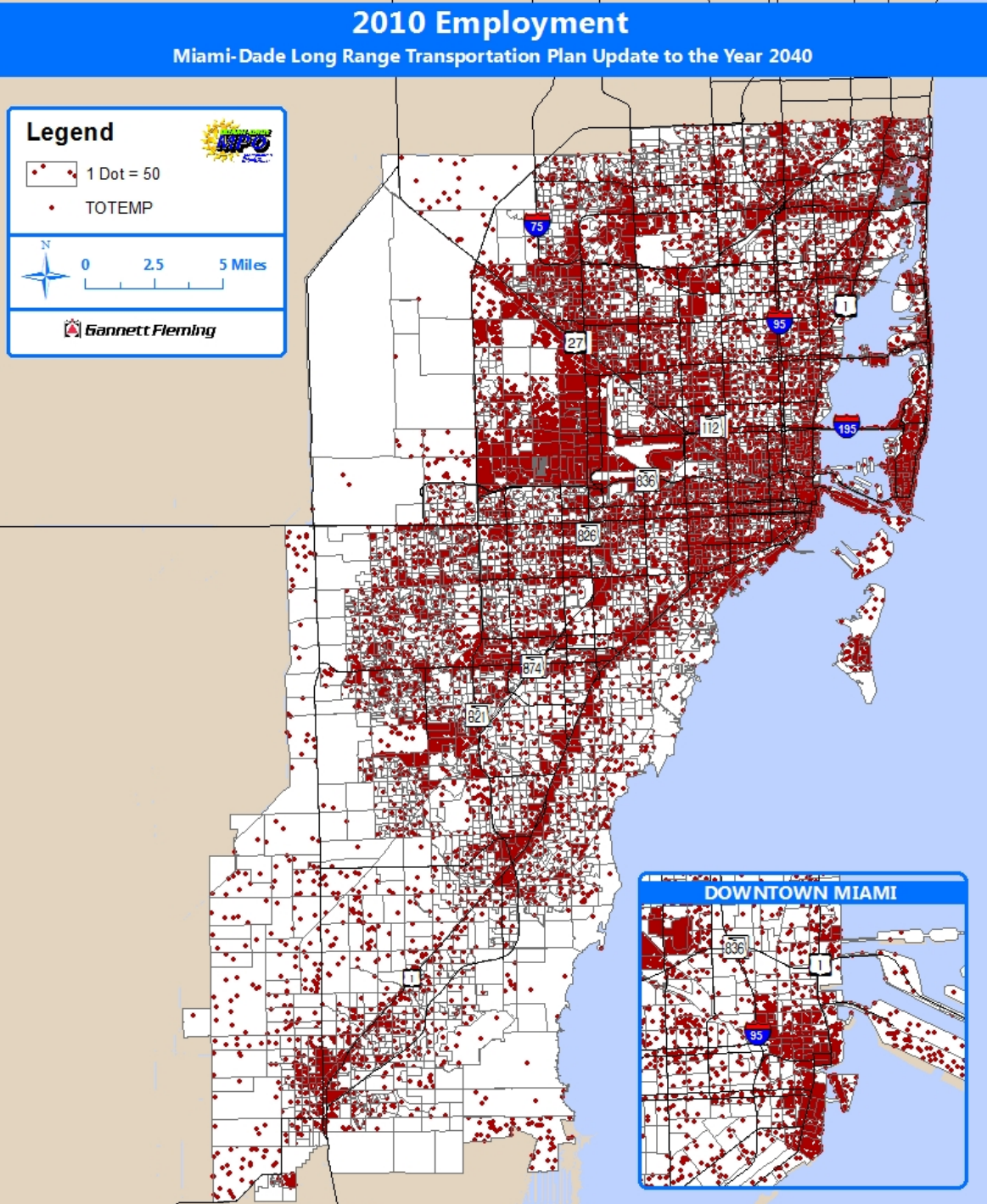
Employment Data

- 2000 Employment
1.18 million



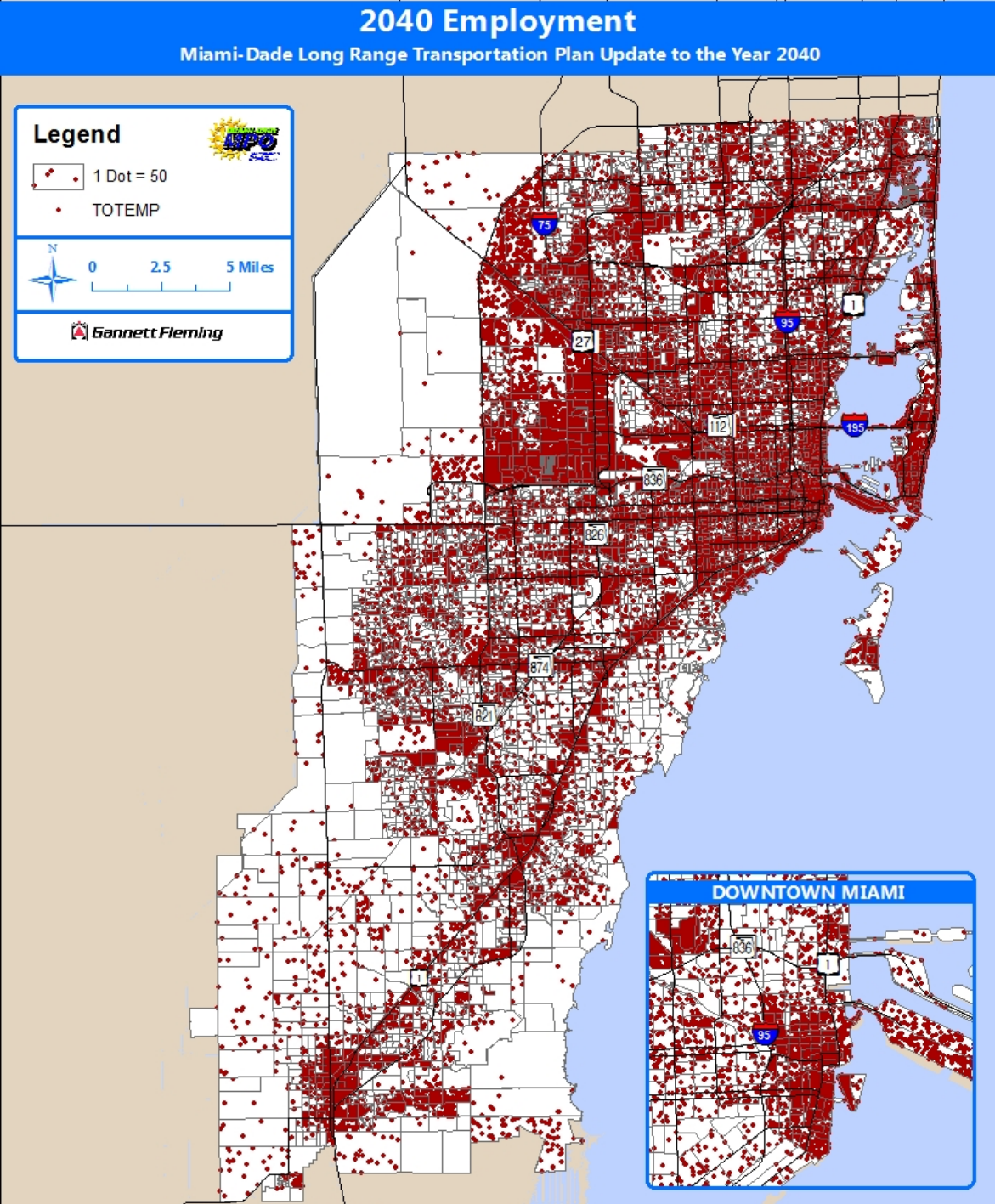
Employment Data

- 2010 Employment
1.41 million



Employment Data

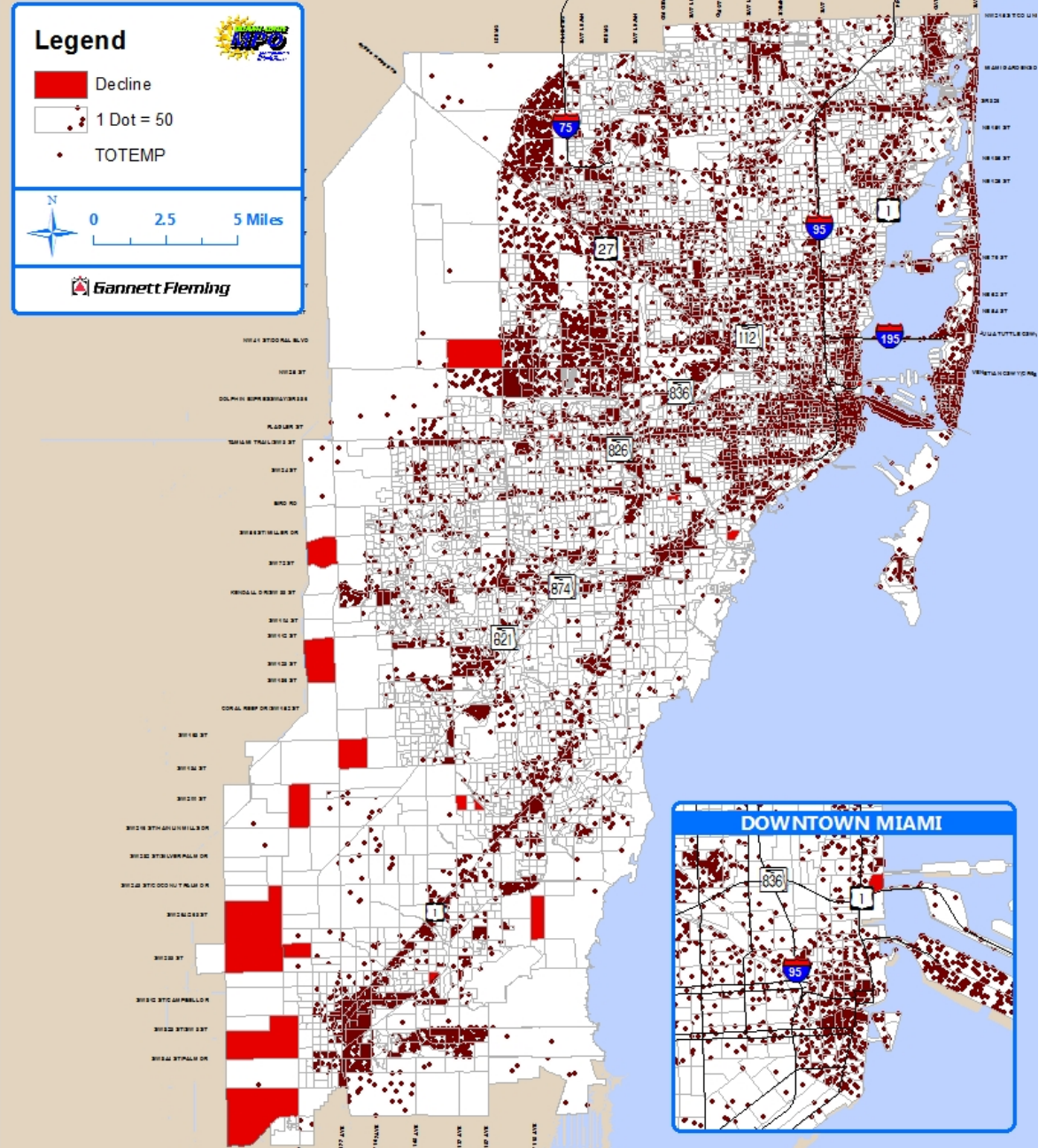
- 2040 Employment
2.05 million



Employment Data

- 2000 Employment
1.18 million
- 2010 Employment
1.41 million
- 2040 Employment
2.05 million
- 2010 - 2040
Employment
Growth
637,000

2010 - 2040 EMPLOYMENT GROWTH Miami-Dade Long Range Transportation Plan Update to the Year 2040



2035 and 2040 LRTP Socioeconomic Data

➤ Population and Employment Annualized Growth

Planning Area	2000 - 2010 Annualized Growth		2005 - 2035 Annualized Growth		2010 - 2040 Annualized Growth	
	Population	Employment	Population	Employment	Population	Employment
North	1.0%	0.2%	0.7%	1.2%	1.1%	1.2%
Beach/CBD	1.2%	1.9%	0.9%	1.0%	1.2%	1.5%
Central	1.7%	2.1%	0.6%	1.1%	0.8%	0.9%
South	2.6%	4.3%	2.4%	1.1%	1.4%	1.7%
West	-0.3%	1.8%	0.8%	0.9%	0.4%	1.2%
Northwest	1.5%	1.6%	0.9%	1.7%	0.6%	1.2%
Total	1.2%	1.8%	1.1%	1.2%	0.9%	1.2%

➤ Population and Employment Total Growth

Planning Area	2000 - 2010 Growth		2005 - 2035 Growth		2010 - 2040 Growth	
	Population	Employment	Population	Employment	Population	Employment
North	10.1%	2.1%	23.0%	41.5%	38.5%	42.7%
Beach/CBD	12.6%	20.8%	31.5%	35.8%	42.8%	54.1%
Central	18.1%	23.3%	21.2%	40.5%	27.8%	32.6%
South	29.2%	51.6%	103.5%	37.2%	49.6%	64.5%
West	-3.3%	19.7%	27.9%	31.0%	12.5%	42.5%
Northwest	16.4%	16.8%	31.4%	67.2%	20.1%	41.9%
Total	13.1%	19.5%	39.0%	44.6%	32.5%	45.1%



2035 and 2040 LRTP Socioeconomic Data

- Projected annualized employment growth between 2010 to 2040 is higher than projected population growth rate for all planning areas
 - Consistent with the annualized growth between 2000 to 2010 with the exception of North planning area
- For South planning area there is considerable difference in employment and population growth rate between 2005 to 2035 and 2010 to 2040 projections



Next Steps

- E+C Network
 - 2012 Existing portion of E+C submitted to modeling team last week
 - 2018 Committed portion of E+C still under review
 - ✓ 6 FDOT projects still require specifications
 - ✓ MDT system update status?
 - All network details must be received by modeling team no later than 8/30/13
- Goals and Objectives to TPC and MPO Board
- Needs Plan development workshop



Miami-Dade 2040 LRTP

Questions / Comments

Carlos Roa

rcf@miamidade.gov

305.375.1833

Franco Saraceno

fsaraceno@gfnet.com

813.882.4366



MOBILITY OPTIONS
2040 Miami-Dade
Transportation Plan
EYES ON THE FUTURE

